

## CATEGORIES

- LED Explosion Proof Light
- LED Flood Light-KL2018G
- UL844 LED Explosion Proof Light
- LED Flood Light
- LED Explosion Proof Light IP66 KLE2018
- LED Explosion Proof Light KLE1018-II
- ATEX LED Explosion Proof Light KLE1017
- LED Industrial Light



Home > Product > LED Flood Light > LED Flood Light KR

Top



## 400W KRS5029E-II Cost-Effective LED Floodlight

With 5 years warranty on all the components, we devoted ourselves to Flood lighting for many years, covering most of European ,Middle East and American markets.

Send Inquiry

## Product Details

400W KRS5029E-II Cost-effective LED Floodlight

**1.Product Introduction:**  
High cost-effective Floodlight



## 2.Product Specification:

<

Model No.	KRS5029E-II-100	KRS5029E-II-200	KRS5029E-II-300	KRS5029E-II-400	Unit
Power Rating	100	200	300	400	W
Voltage Rating	100-277				VAC
Frequency	50-60				Hz
Power Factor	>0.95				-
Lightning Resistance	5000				KV
Lifespan of LED	100,000				h
LED light efficiency	120				lm/W
CCT	4000/6000				K
CRI	>75				-
Lamp Body Material	Aluminum Alloy, ADC12				-
Lamp Housing Color	Silver				-
Size of Input Cable	Φ6 ~ 8mm, 3×1.5mm <sup>2</sup>				-
IP Rating	IP65				-
Corrosion-proof grade	WF2				-
Working temperature	-40 ~ 55				°C
Storage Temperature	-40 ~ 60				°C
Dimensions	306X150X105	300X306X173	450X306X173	600X306X145	mm
Net Weight	3.7	7	11.2	14.8	Kg

## 3.Product Feature and Application:

### Features:

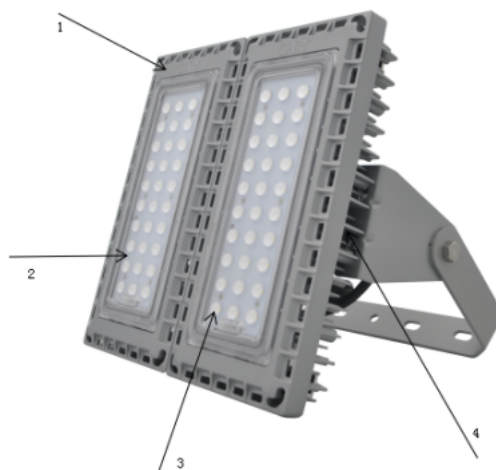
- 1 Good quality LED chip
- 2 H
- 3 Adopt our own design of the lens for the light distribution.
- 4 More beam angle optional for different places.
- 5 The lamp has a reasonable structure, stable and durable, with the design of modularity, it is easily combine to different power by modules.
- 6 PC cover pressed from superior unique material, high impact resistance performance, excellent light transmission, anti-dazzle.

### Applications:

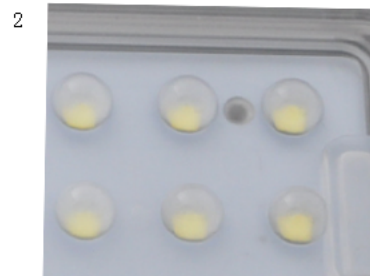
Transformer substations, workshops, warehouses, factories, power distribution room, corridor, railway stations, tunnels, airport terminal, port, court yard, industrial buildings, city lighting and other places as fixed lighting.



#### 4.Product Details:



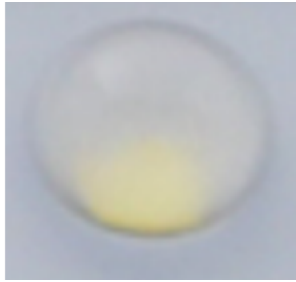
ADC12 body



Bay PC lens, 30°/60°/90°

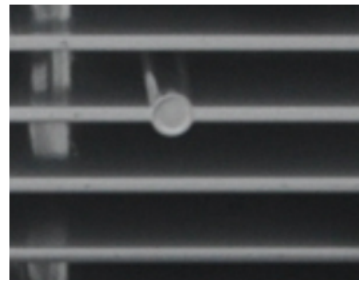


3



High efficiency light source

4



6063 heat sink, 3D structure

##### 5. Qualification:

[←  
Online  
Service](#)[▲  
Top](#)



Salt Spray test chamber



Wave-Soldering



Protection Grade Tester



EMC Tester



Integrating Sphere



High-Low Temperature Tester



CNC Lathe



Aging Room



Production Line

←  
Online  
Service



Top



## 6.Deliver,Shipping and Serving:

Delivery Time:

1. Sample orders: 5-7 days
2. Bulk orders: 15-20 days

Shipping Method:

1. Ship by express
2. Ship by air
3. Ship by sea



Our Service:

1. Customized design is available. OEM and ODM are welcomed.
2. One pc sample is acceptable.
3. All of your inquiry will be replied in 10 hours.
4. Protection of your sales area, ideas of design and all your private information.
5. Deliver the goods to our customers all over the world with speed and precision.
6. Rich marketing experiences for more than 6 years.
7. Offer customer with most competitive price and high-end quality led lights.

#### 7.FAQ

Q: What are your terms of delivery?

A: EXW, FOB, CFR, CIF.

Q: How To Deal With The Faulty?

A: Firstly, Our products are produced in strict quality control system and the defective rate will be less than 0.2%.

Secondly, during the guarantee period, we will send new lights with new order for small quantity. For defective batch products, we will repair them and resend them to you or we can discuss the solution including re-call according to real situation.

Q: How Do You Ship The Goods And How Long Does It Take To Arrive?

A: We usually ship by DHL, UPS, FedEx or TNT. It usually takes 3-5 days to arrive. Airline and sea shipping also optional.

#### 9.Recommendations

You may like these:



CARY® 凯瑞

WWW.SZCARY.COM



←  
Online  
Service



▲  
Top



←  
Online  
Service



▲  
Top

Hot Tags: 400w krs5029e-ii cost-effective led floodlight, suppliers China, manufacturers, factory, wholesale, price, made in China, 36w LED Flood Light, UL Explosion Proof Linear Light, Aluminum Alloy IP65 ETL DLC 50w LED Flood Light, 50w LED Flood Light, ATEX LED Location Linear Light, Silver Color Bracket Mount 36w LED Flood Light

#### Related Products



1200mm High Luminous Efficacy 50W



150W Aluminum Alloy Yellow Color



400W LED Flood Light



100W Bayer PC Lens IP65 LED Flood



Marine high Power 120w Explosion Proof



50W ATEX Energy Industrial 50W

#### Inquiry

Your Name:

\* E-mail:  Please input your email here.

Phone:

Company:

Title:

\* Content:

Please include details like size, weight, destination port and etc., so that we can quote the best price.

Send

←  
Online  
Service



▲  
Top

## ABOUT US

- [Home](#)
- [About Us](#)
- [Product](#)
- [News](#)
- [Knowledge](#)
- [Contact Us](#)
- [Showroom](#)
- [Mobile](#)
- [XML](#)

## PRODUCT

- [LED Explosion Proof Li...](#)
- [LED Flood Light-KL201...](#)
- [UL844 LED Explosion ...](#)
- [LED Flood Light](#)
- [LED Explosion Proof Li...](#)
- [LED Explosion Proof Li...](#)
- [ATEX LED Explosion Pr...](#)
- [LED Industrial Light](#)

## CONTACT US

Address: Building 1, No.29 Industrial West Zone, Makan Road, Xili, Nanshan, Shenzhen, China.

Tel: +86-755-26014801

Fax: +86-755-26929306

E-mail: [info@szcary.com](mailto:info@szcary.com)



Copyright © Shenzhen Cary Technology Co.,Ltd All Rights Reserved.